

ClearVue Solar Balustrade



High Transmittance BIPV

MAXIMIZES ENERGY GENERATION WITH SOLAR BIPV BALUSTRADE SOLUTIONS

ClearVue maximizes energy generation with its solar balustrade solutions which can be used for a broad range of building canopies, balcony railings, fencing and more. ClearVue provides customizable high transmittance glass options specifically designed for building areas where natural light is desired in addition to energy generation to support sustainable building design that stands the test of time.



Extending renewable energy generation across glass surfaces of buildings is now possible using tailor-made crystalline BIPV.

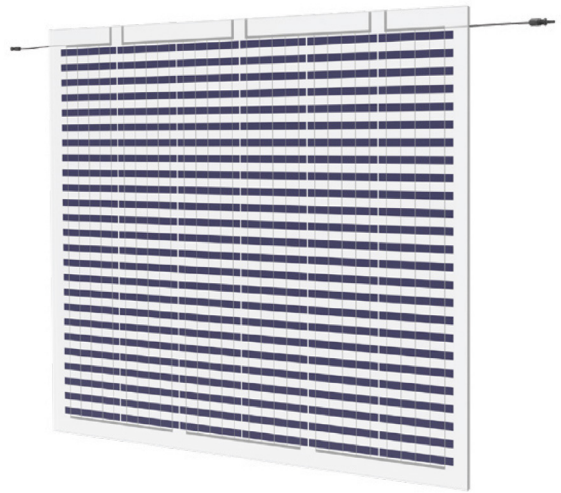
Clearvue's solar balustrade products provide customizable levels of glass to solar cell distribution for varying levels of energy generation and light transmittance.

ClearVue Solar Balustrade Solutions

Highly customisable energy generation

HIGHLIGHTS

- Cell size and spacing is customizable
- Highly transparent for excellent light transmittance
- Ultra narrow frame design maximizes views
- Optimized energy generation
- Supports renewable energy and carbon offset goals
- Long term operation and reliability
- IP68-rated water resistance, fire tested and wind resistant
- Long lifespan supporting on-site energy generation



CERTIFICATIONS

IEC 61215	PV module safety qualification
IEC 61730	Photovoltaic (PV) module safety qualification
EN 13501-1:2018	Fire classification, Achieved A2-s1, d0
AS 4284	Testing of the building facade
UL 61730	PV module safety testing



Results vary based on installation environment. ClearVue can provide a full project assessment to estimate the likely real world results for your specific project.